

| *6 | M3 INSERT | SS 304 | 14 |
|---------|-----------------------|---------------------------|-----|
| 5 | M3X8 ALLEN HEX BOLT | SS 304 | 14 |
| 4 | DC_STRIP ASSEMBLY | II/ICH/12" DC/01/01/01 | 1 |
| 3 | O-RING-2 | RUBBER SILICON | 1 |
| 2 | DC_OC COVER TOP PLATE | BRASS (60:40) | 1 |
| 1 | DC_OC COVER PLATE | BRASS (60:40) | 1 |
| PART NO | PART NAME | DESCRIPTION / MATERIAL | QTY |

DRW DOC ID

LINKED EVS PT ID

PBS TITLE

RELEASED BY

ITER INDIA (IPR) GANDHINAGAR

APPROVED BY

P AJESH

CHECKED BY

CONTROLLED BY

DRAWN BY

P AJESH

REV DATE

28/07/17

PT MATURITY

PT VERSION

SHEET SIZE

NTS

THIRD ANGLE PROJECTION

NO OF SHES

04

PBS 3 LEVELS

ITER-India

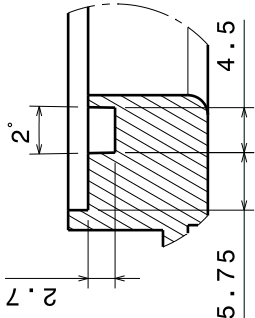
CONFIDENTIAL UNLESS AUTHORISED

The information on this drawing is confidential under the terms of the ITER India agreement. This information shall not be transmitted to anyone who is not authorised to receive it.

DRAWING TITLE

DC_STRIP COVER ASSEMBLY

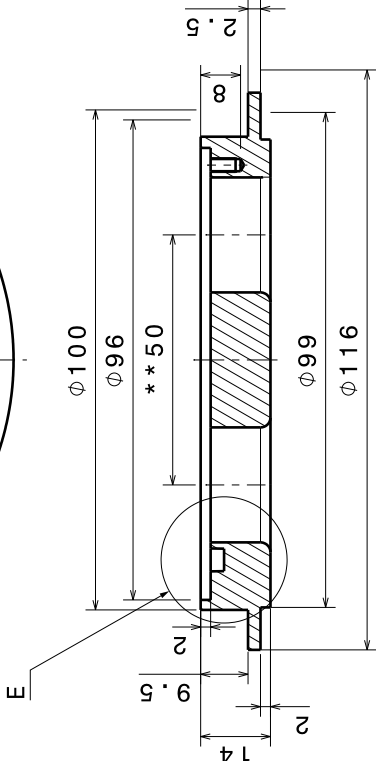
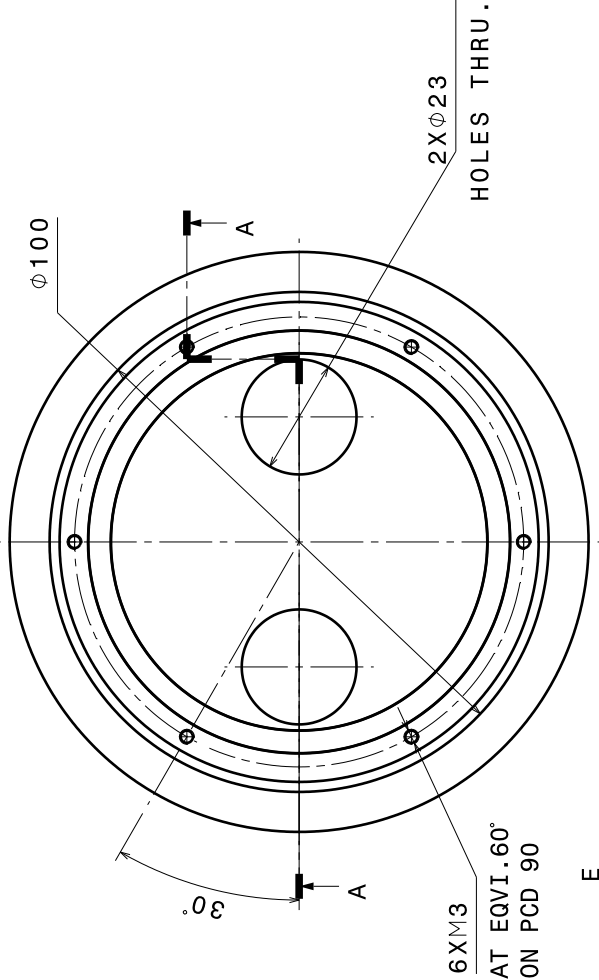
| | | | |
|-------------------------|--------------------------------|--------------------------|----|
| DC_STRIP COVER ASSEMBLY | | 6-1/8" DC_OC ASSEMBLY | |
| DRAWING NUMBER | II/ICH/6-1/8" DC/4-PORTS/01/01 | SHEET REVISION OR STATUS | 01 |



Detail E
Scale: 2:1

MATERIAL:-BRASS(60:40)
QTY.:- 1

- NOTE:
- 1.ALL THREADS INSERT TO BE USED
 - 2.ALL SHARP EDGES TO BE REMOVED AND REPLACED BY CHAMFER OF 1x45 DEG
 - 3.FLATNESS VALUES ARE NOT TO EXCEED 3 MM/METER ON ANY UNSPECIFIED SURFACE
 - 4.ROUGHNESS OF ALL UNSPECIFIED SURFACES DO NOT EXCEED Ra 8µm
 - 5.ALL UNSPECIFIED TOLERANCE TO BE CONSIDERED AS PER ISO 2768-1:1989



** IMPORTANT DIMENSIONS.

Section view A-A

| | | | | | |
|------------------------------|--|--------------------------------|--|---|--|
| ITER INDIA (IPR) GANDHINAGAR | | CONFIDENTIAL UNLESS AUTHORISED | | ITER-India | |
| RELEASED BY | | APPROVED BY | | The information on this drawing is confidential under the terms of the ITER India agreement. This information shall not be transmitted to anyone who is not authorised to receive it. | |
| P AJESH | | P AJESH | | | |
| CHECKED BY | | CONTROLLED BY | | DRAWING TITLE | |
| | | | | DC_OC COVER PLATE | |
| | | | | DC_STRIP COVER ASSEMBLY | |
| | | | | DRAWING II/ICH/6-1/8" DC/4-NUMBER | |
| | | | | SHEET REVISION OR STATUS | |
| | | | | 02 | |

** IMPORTANT DIMENSIONS.

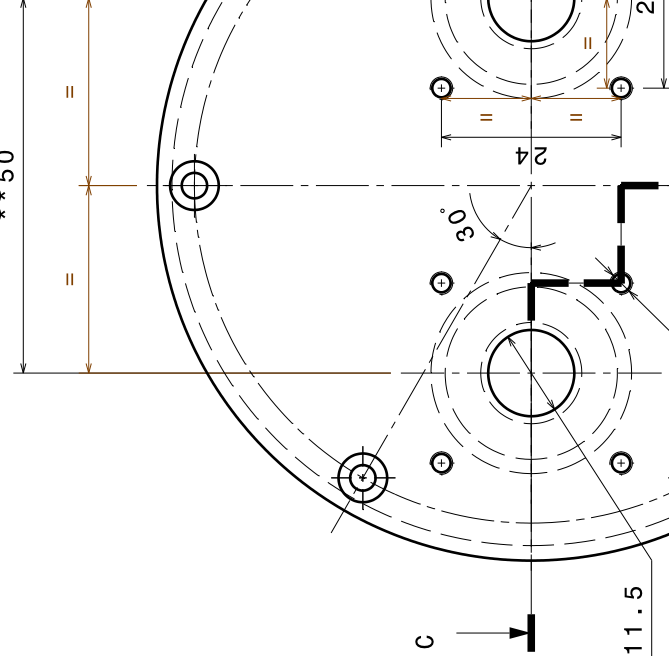
C'BORE HOLES - 6 NOS.
AT EQVI 60° ON PCD 90

4XM3 - 6MM DEEP
THREADED HOLES
WITH INSERT

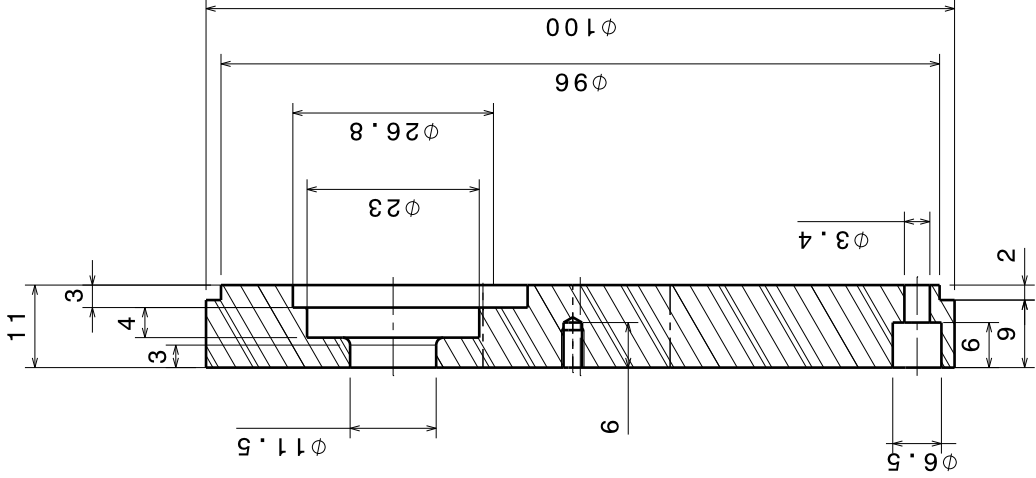
4XM3 - 6MM DEEP
THREADED HOLES
WITH INSERT

2X ϕ 11.5

** 50



Section view C-C



MATERIAL: - BRASS (60:40)
QTY. :- 1

- NOTE:
- 1. ALL THREADS INSERT TO BE USED
 - 2. ALL SHARP EDGES TO BE REMOVED AND REPLACED BY CHAMFER OF 1X45 DEG
 - 3. FLATNESS VALUES ARE NOT TO EXCEED 3 MM/METER ON ANY UNSPECIFIED SURFACE
 - 4. ROUGHNESS OF ALL UNSPECIFIED SURFACES DO NOT EXCEED Ra 8 μ m
 - 5. ALL UNSPECIFIED TOLERANCE TO BE CONSIDERED AS PER ISO 2768-1:1989

| | | |
|------------------------|---------------|---|
| DRW DOC ID | RELEASED BY | ITER INDIA (IPR) GANDHINAGAR |
| LINKED EVS PT ID | APPROVED BY | CONFIDENTIAL UNLESS AUTHORISED |
| PBS TITLE | P AJESH | The information on this drawing is confidential under the terms of the ITER India agreement. This information shall not be transmitted to anyone who is not authorised to receive it. |
| REV DATE | CHECKED BY | |
| 28/07/17 | | |
| SHEET SIZE | CONTROLLED BY | |
| - | | |
| SCALE | DRAWN BY | |
| NTS | P AJESH | |
| THIRD ANGLE PROJECTION | PBS 3 LEVELS | |
| NO. OF SHTS | | |
| 04 | | |

| | |
|-------------------------|--------------------------|
| DRAWING TITLE | SHEET REVISION DR STATUS |
| DC_OC COVER TOP PLATE | |
| DC STRIP COVER ASSEMBLY | |
| DRAWING NUMBER | DC/4-PORTS/01/01 |
| 03 | |

